

A **nonlinear** multimodal platform designed by students, staff, and faculty at UBC. Concepts are presented as **nodes**, which connect to form a **tapestry**, allowing users to **integrate concepts**, presented within one space.

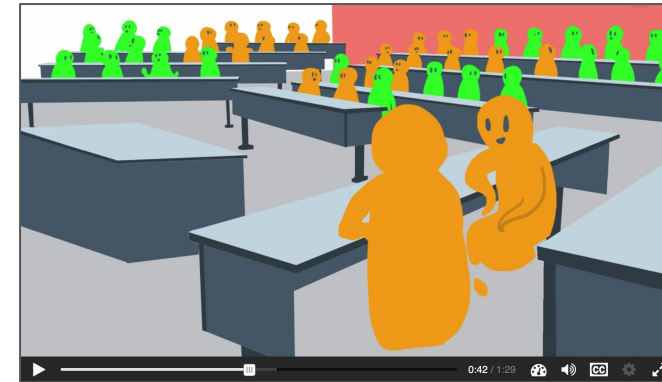


Sample HSP Interactive Virtual Tour (360), created by Dr. Matthew Mitchell for LFS 250

Which of the following is false regarding borderline personality disorder (BPD)?

- ☐ There appears to be a clear genetic contribution to BPD.
- ☐ Despite being emotionally disruptive, BPD is not dangerous for the individual with BPD.
- ☐ The prevalence of BPD is approximately 1-2% in the population.
- ☐ The overwhelming majority of individuals with BPD are women.
- ☐ A majority of individuals with BPD have at least one comorbid psychological disorder.

Self-check question on personality disorders



Intercultural Understanding module video created by Simon Lolliot and Linnea Ritland



Videos



Text



HSP Interactive Widgets



External Link

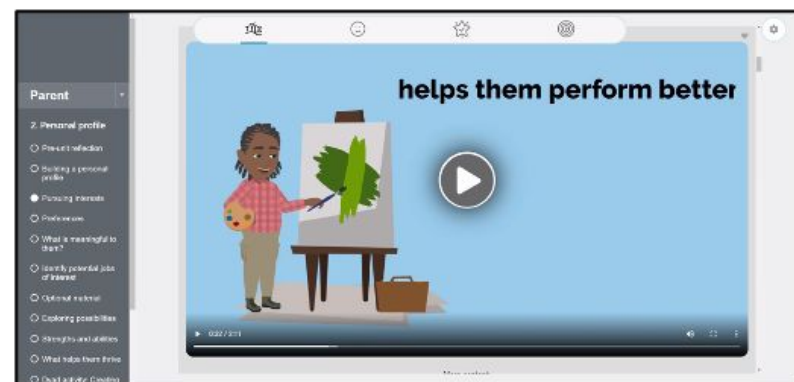


WordPress Posts

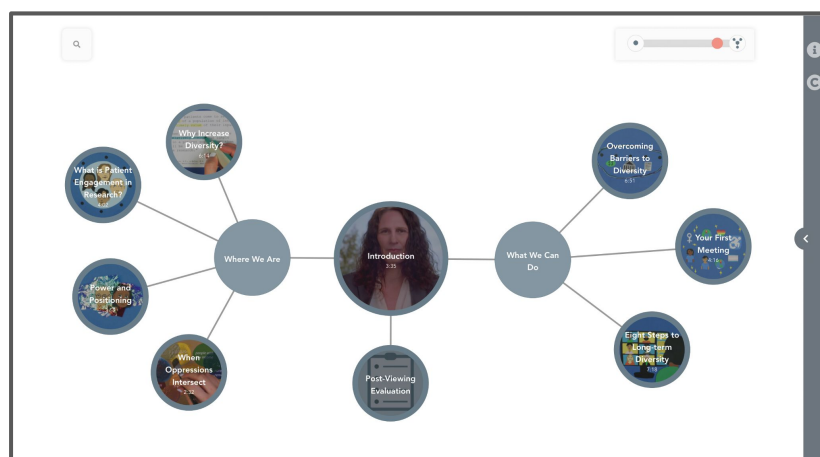


Accordions

Use-Cases

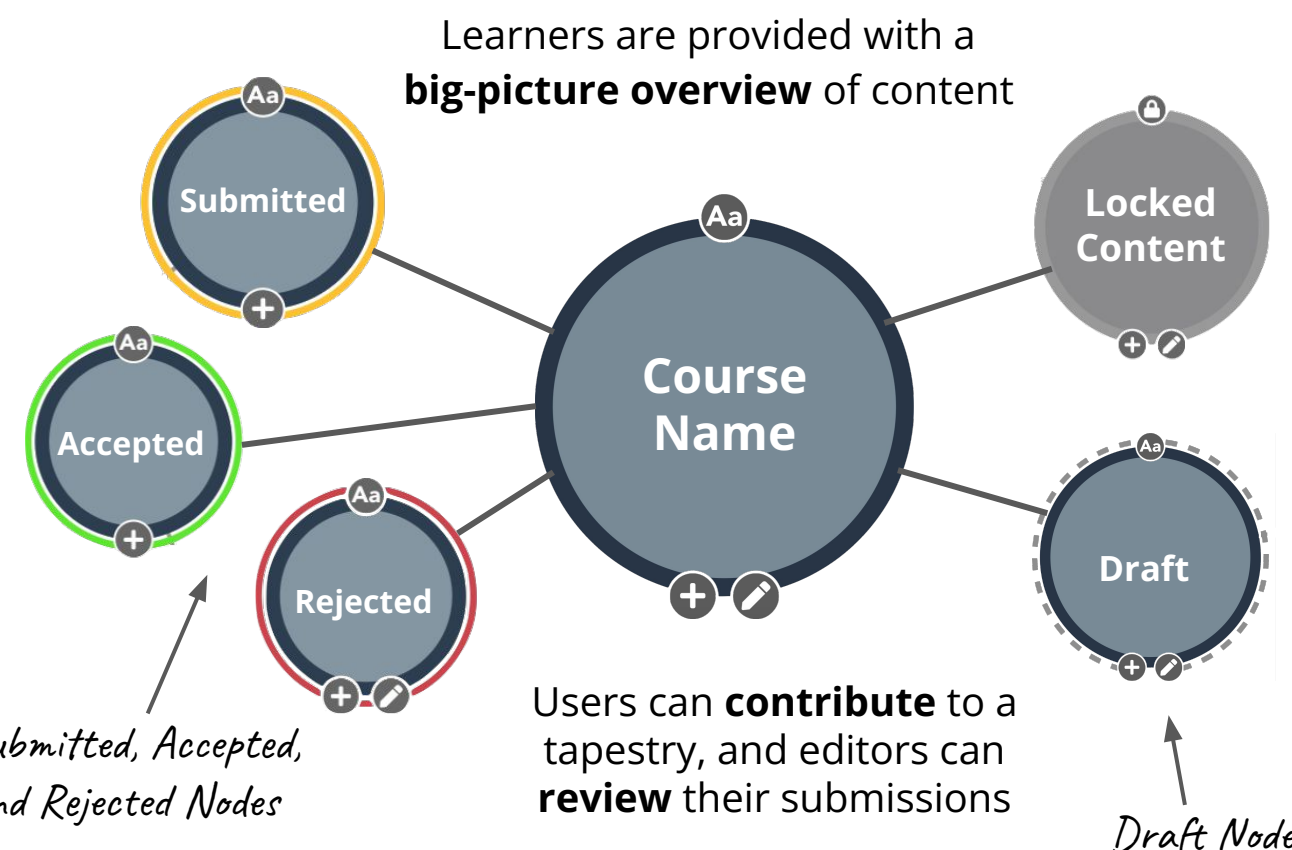


Sample image from the TYDE project's tapestry, which implemented Tapestry Tool within their highly customized and interactive interface.



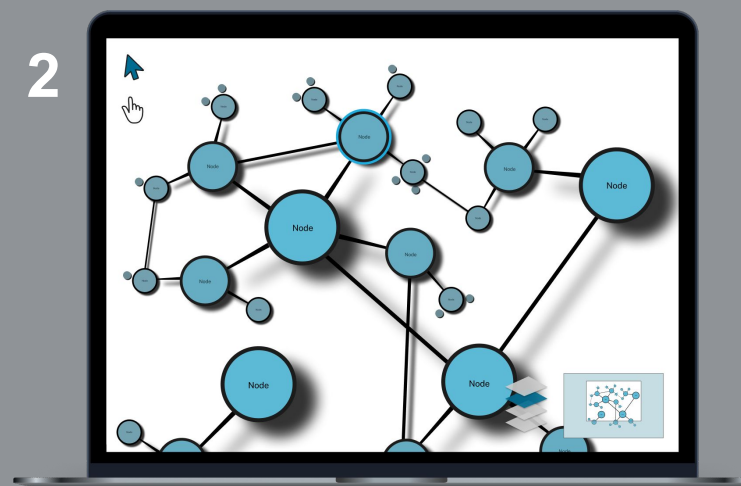
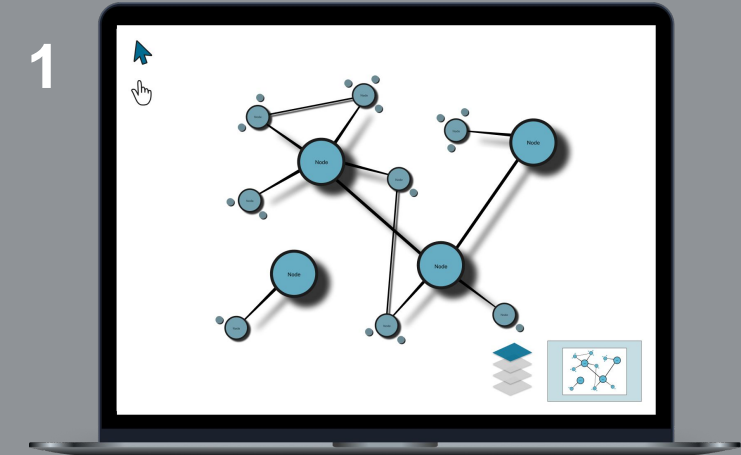
Sample image from the Primer BC SUPPORT Unit tapestry.

Content Types



Future Directions: Tapestry Tool 3.0

A future iteration of the Tapestry Tool with dynamic **zooming** features



Tapestry 3.0 is funded by a donation from Microsoft USA.



Learn More

Website: <https://tapestry-tool.com/>

Acknowledgements

Melanie Butt, Narendra Syahrasyad, and Rachelle Hole, Erin Michalak

We gratefully acknowledge the financial support for this project provided by UBC Vancouver students via the Teaching and Learning Enhancement Fund.

